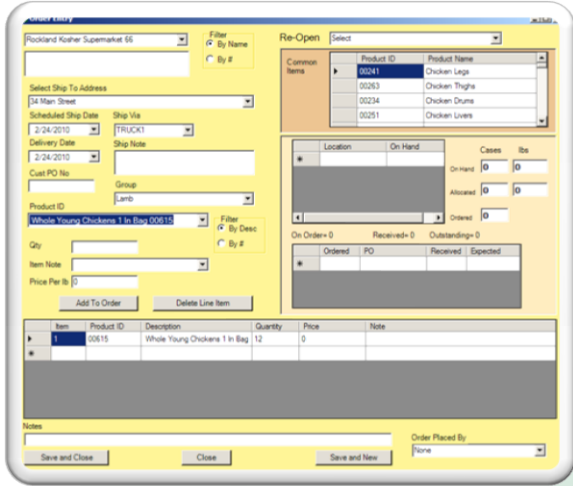


**Provision Processing System** is an MS SQL/Windows-based ERP system designed for Food Processing Plants and Wholesale Food Distributors from the processing floor or warehouse out. We understand your production and shipping needs. This is not an accounting package trying to handle the processing floor. PPS is designed to handle everything from the customer order to the shipping dock. Clients include global leaders in selling, marketing and distributing food products around the globe.

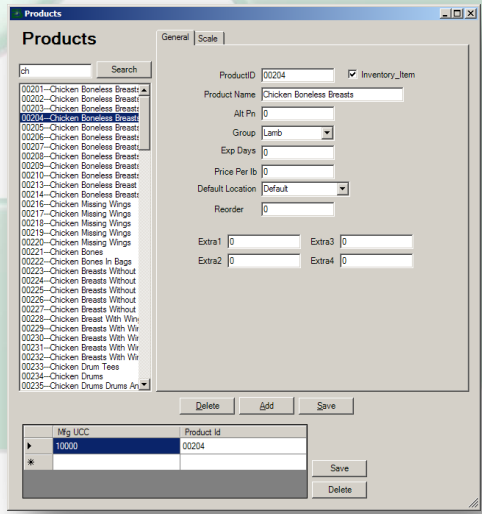


**Orders**

- Multiple Ship To Addresses.
- Inventory Reference
- Pricing
- Shipping Notes
- Common Item Reference
- PO Reference
- Low Inventory Warning
- Real Time Order Fulfillment
- Ship Scheduling
- Order Tracking
- Web Ordering Add Ons
- Wireless Barcode Real Time Fulfillment

**Products & Scales**

- Smart Scales For Full Graphic Messaging
- Wash Down Scales and Printer Enclosures
- Networked TCP/IP Scales For Real Time Data
- Catch and Fixed Weights
- Ingredients
- Reorder Points
- Sell By Calculation
- Multiple Label Formats
- GTIN / UCCEAN128 Labeling
- User Fields
- Pre Pricing
- Grouping
- Auto Scale Tare
- Supplier Product Cross Reference



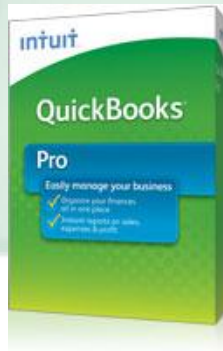


## Inventory Production Ship Receive Track

- UCCEAN128 Barcode Tracking
- Wireless Real Time Bar Code Data Collection
- Lot Tracking
- Individual Case Serial Numbers Prevent Mis-ships
- Costing
- Multiple Integrated Crystal Reports
- Reorder Levels
- Locations
- Cycle Counting
- Handle Inhouse and Received product
- Vendor Labeling Support
- Multiple Label Formats Supported for Private Labeling
- Simple Recall
- Production Tracking
- Yield Calculation
- Label On Receipt

## QuickBooks Integration

- Sync:
- Customers
- Products
- Vendors
- Invoices
- Average Cost



## Reporting

Integrated Crystal Reports Allows Report Export to:  
Excel – PDF – Word – HTML

### Reports Include:

- Customer List – Product List – Inventory Detail – Inventory By Location
- Inventory Summary – Inventory by Date – Inventory Detail Cost –
- Inventory Group Cost – Production Tracking Report – Reprint Shipping
- BOL – Reprint Warehouse Work Order – Rework – PO Receipt Detail –
- Reorder – Recall From Production Lot – Recall From Supplier Case
- Barcode

